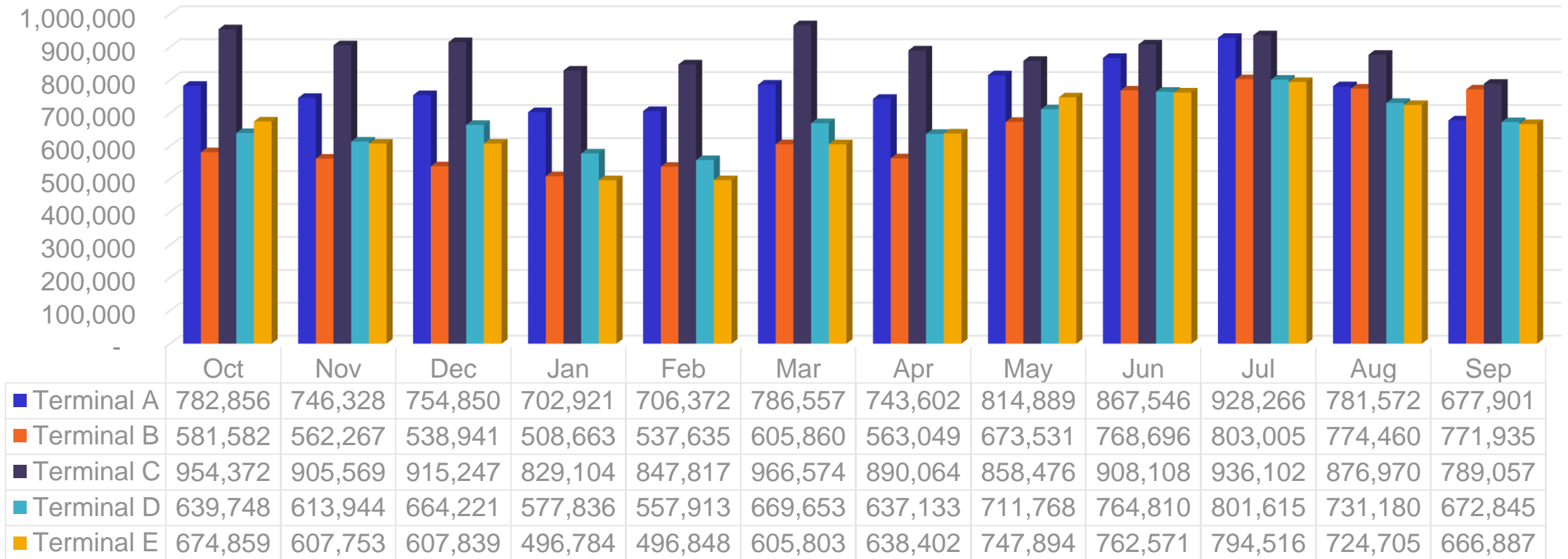


FY23 Enplanements by Terminal

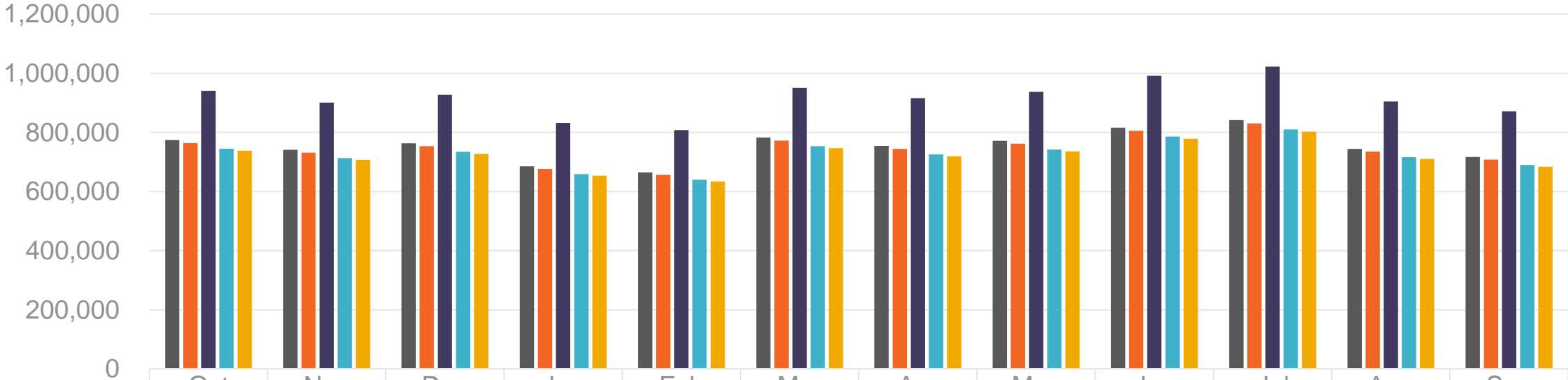


FY24 Monthly Enplanements by Terminal



Terminal A Terminal B Terminal C Terminal D Terminal E

FY25 Monthly Enplanements by Terminal



	Oct	Nov	Dec	Jan	Feb	Mar	Apr	May	Jun	Jul	Aug	Sep
■ Terminal A	774,188	741,319	762,937	684,990	664,850	782,509	754,137	771,459	816,339	841,468	744,490	717,071
■ Terminal B	764,091	731,651	752,986	676,056	656,178	772,303	744,301	761,397	805,692	830,494	734,780	707,719
■ Terminal C	940,595	900,661	926,925	832,224	807,755	950,704	916,234	937,279	991,805	1,022,333	904,514	871,201
■ Terminal D	744,966	713,338	734,139	659,135	639,755	752,973	725,671	742,340	785,526	809,707	716,389	690,005
■ Terminal E	738,368	707,021	727,638	653,298	634,089	746,304	719,245	735,766	778,569	802,536	710,045	683,894

■ Terminal A ■ Terminal B ■ Terminal C ■ Terminal D ■ Terminal E

Note: Consistent with industry trends, DFW is anticipating upgauging the aircraft parking to larger jets in Terminal E. Therefore, resulting in increased traffic.

